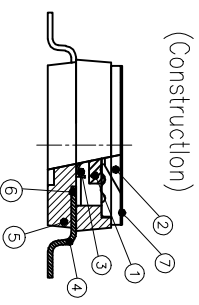
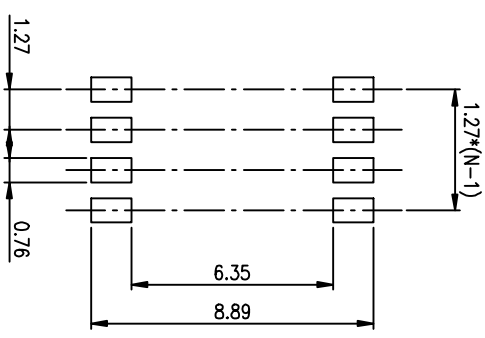
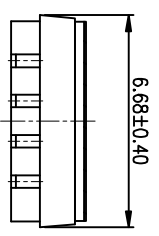
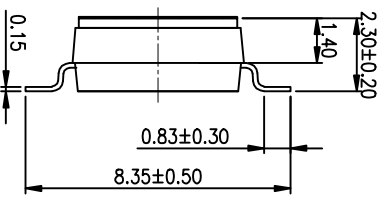
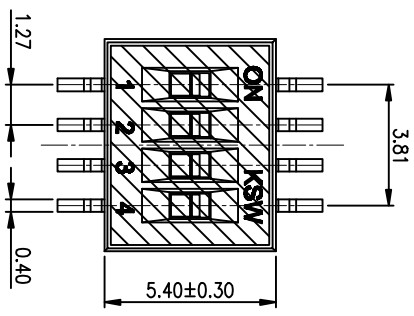


PRODUCT NO. DSHPO4TSGER
RoHS compliant

NOTES :1.Specification:

- 1>.Operating force:1000gf Max
- 2>.Operating Temperature: -40° to+85°
- 3>.Storage Temperature: -40° to+85°
- 4>.Electricalife Life:1000cycles 25mA 24VDC
- 5>.Mechanical Life:3000cycles Operations

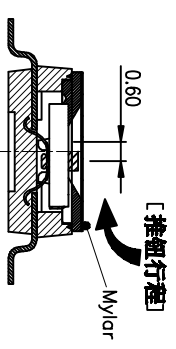
2. PLATING:
GOLD FLASH 1u"~2u" SOLDERTALL,
1u"~3u" GOLD PLATING ON THE CONTACT AREA,
WITH 50u" NICKEL UNDERPLATINGOVERALL.
3. PART NUMBER DESCRIPTION :
DSHP XX I S G E R



RECOMMENDED P.C.B. LAYOUT (TOP VIEW)

Number	Part Name	Material	Finished
①	Actuator	UL94 V0	White
②	Cover	UL94 V0	Black
③	Movable	Beryllium Copper	3μ Gold
④	Terminal	Brass	1μ Gold
⑤	Base	UL94 V0	Black
⑥	Terminal Contact	Brass	1μ~3μ Gold
⑦	Mylor	UL94 V0	0.05mm

TOLERANCE UNLESS OTHERWISE SPECIFIED		ANGLES		PROJECTION	
0 ± 0.25	0 ± 2'	0 ± 0.15	.0 ± 1'	0.00 ± 0.10	.00 ± 0.5'
DESIGN kathy 03/20/12					
DRAWING					
CHECK					
APPRO.					
<p>總督精密有限公司 KINGTEK INDUSTRIAL CO.,LTD</p> <p>BY DSHP SERIES PITCH 1.27mm</p> <p>PRODUCT FAMILY DSHP SERIES</p> <p>PRAT NO. DSHPO4TSGER</p> <p>FILE NO. DSHPO4TSGER-A</p> <p>SIZE UNIT SCALE SHEET REV.</p> <p>A4 mm Z : 1 1OF 1 A</p>					



[包裝方式: T=管裝 R=Reel]
 [電鍍層: B=鍍鍍層1u"~3u" 焊腳部, 2u" G=鍍鍍層30u" 焊腳部, 30u" F=鍍鍍層10u" 焊腳部, 10u"
 [G=鍍全金 S=內鍍金(接腳部) 外鍍鍍(焊腳部)]
 [腳型: S脚 / J脚 / I脚 / A脚 / 2脚]
 [T=低推黏膠 S=低推不黏膠 L=長推]
 [產品P數: 02=2P 04=4P 06=6P 08=8P 10=10P 12=12P]

A B C D

1 2 3 4 5 6

REV.	ECN NO.	DR	DATE